

GENA-Peppol, Enhanced B2B (eB2B) Interoperability model

Start using the next-generation Peppol-based interoperability standard!

Designed by Service Providers for Service Providers

B2B exchanges interoperability

Our vision

At GENA, we envision a world where **seamless, secure, and interoperable digital transactions drive global trade and economic efficiency.**

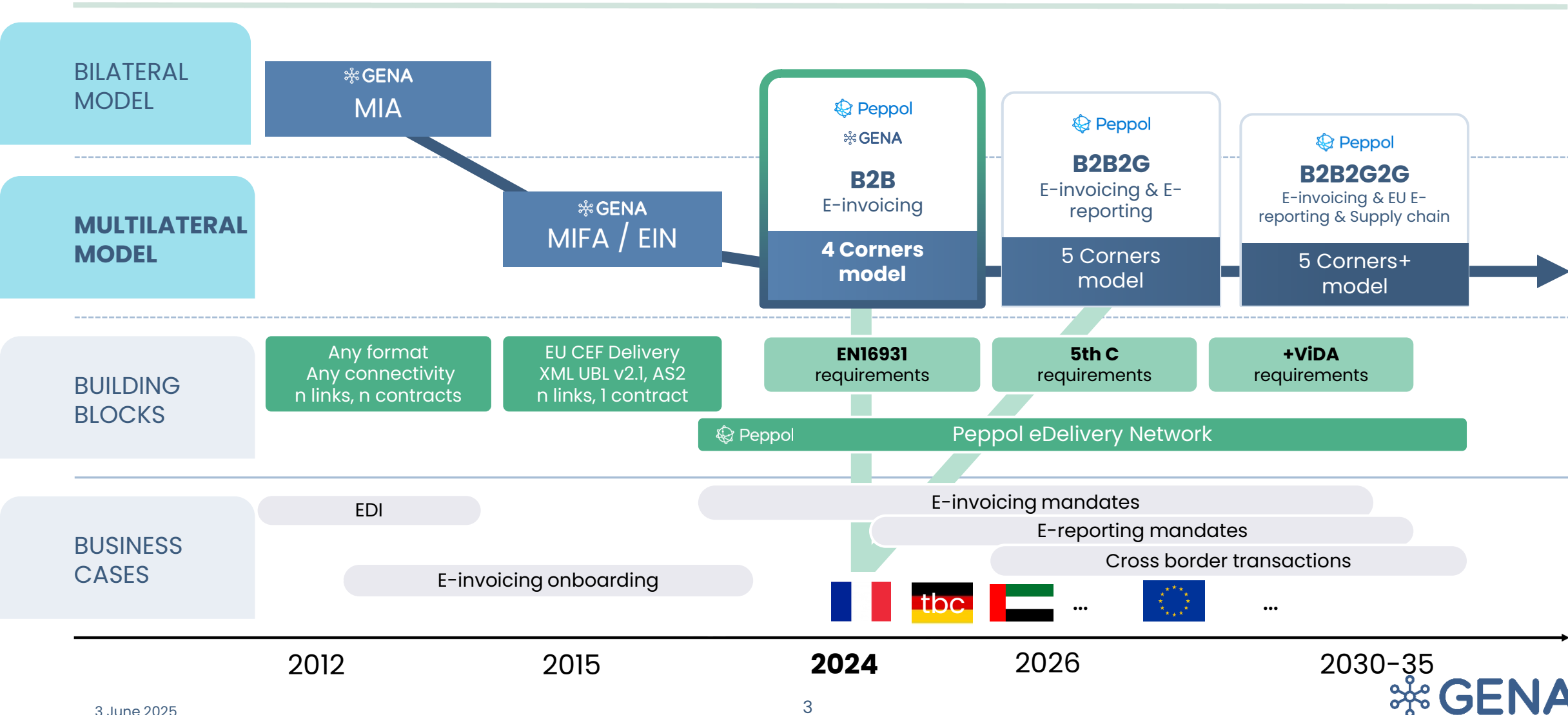
Since its founding in 2011, GENA (formerly EESPA) has constantly advocated for global Interoperability through standardized and secure solutions built on trusted networks and global standards.

In 2024, GENA decided to partner with OpenPeppol to develop a best-in-class next-gen B2B interoperability framework. This initiative combines the **extensive experience of Service Providers** in B2B exchanges with the **proven technical standards of Peppol.**

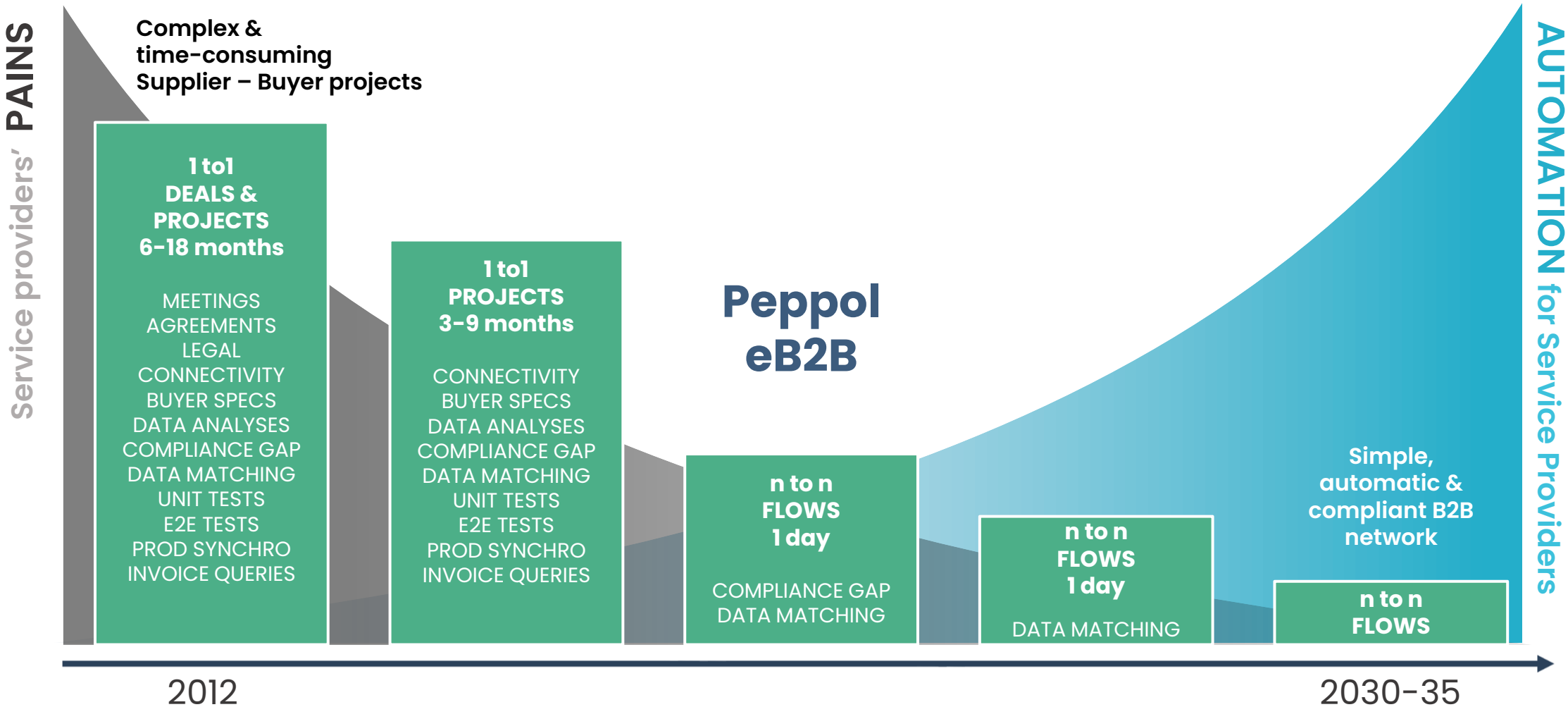
Our goal is to establish this Enhanced B2B interoperability framework (**eB2B**) as the common *4 corner* model standard for **all “roaming/interoperability” between solution providers.**

Furthermore, this model **supports the 5 corner DTCE model**, which GENA actively endorses and promotes, in response to the global rollout of mandatory e-invoicing and Continuous Transaction Controls (CTC).

The interoperability roadmap : the path to a seamless no touch B2B & tax compliant model



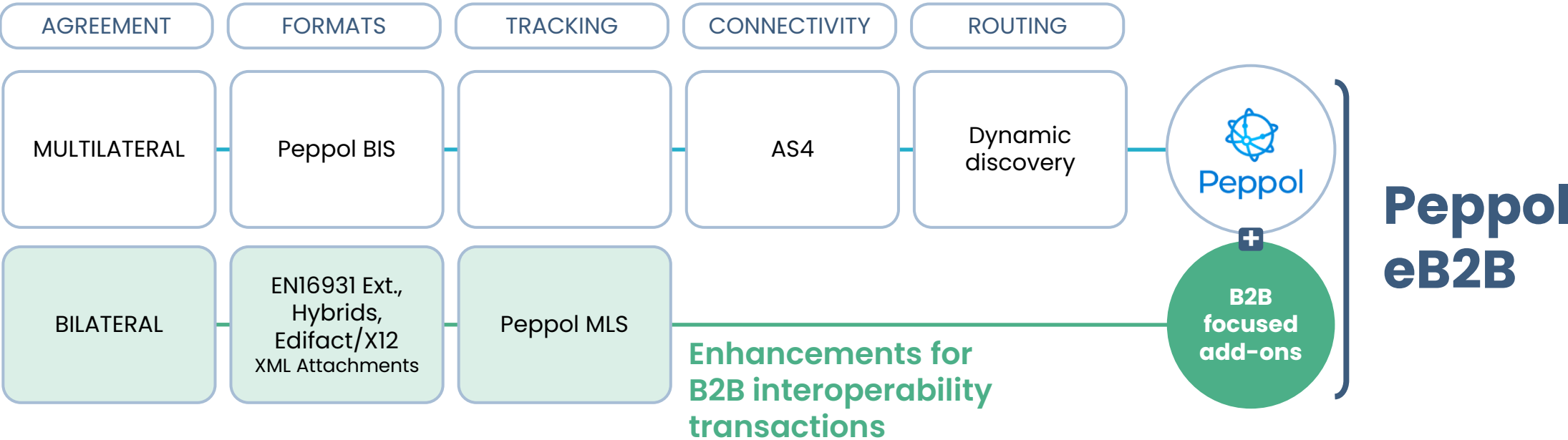
The interoperability roadmap : the path to a seamless no touch B2B & tax compliant model



What is eB2B?

GENA Peppol Enhanced B2B model

4C model, enhanced for **B2B SP interoperability transactions**, based on international & future proof standards, conceived by GENA & OpenPeppol



Why eB2B?

Benefits win-win-win



END USERS

- ✓ **Future proof:** nextgen standards
- ✓ **Robust:** fully distributed network
- ✓ **Secure:** transmission, KYC
- ✓ **Flexible:** supplier/buyer data req.
- ✓ **Cost effective:** onboarding, integration
- ✓ **Easy commercial onboarding**
- ✓ **High data quality:** automation, analyses
- ✓ **Full ERP integration:** last mile aware
- ✓ **Transparent document processing**
- ✓ **Portable:** easier to change SP



SERVICE PROVIDERS (SPs)

- ✓ **Future proof:** nextgen standards
- ✓ **Robust:** fully distributed network
- ✓ **Secure:** transmission, tracking
- ✓ **Flexible:** bi- or multi-lateral flows
- ✓ **Cost effective:** flows maintenance
- ✓ **Seamless roaming:** automatic
- ✓ **Easy subcontracting:** SP/mgt software, last mile, 3rd network connection...

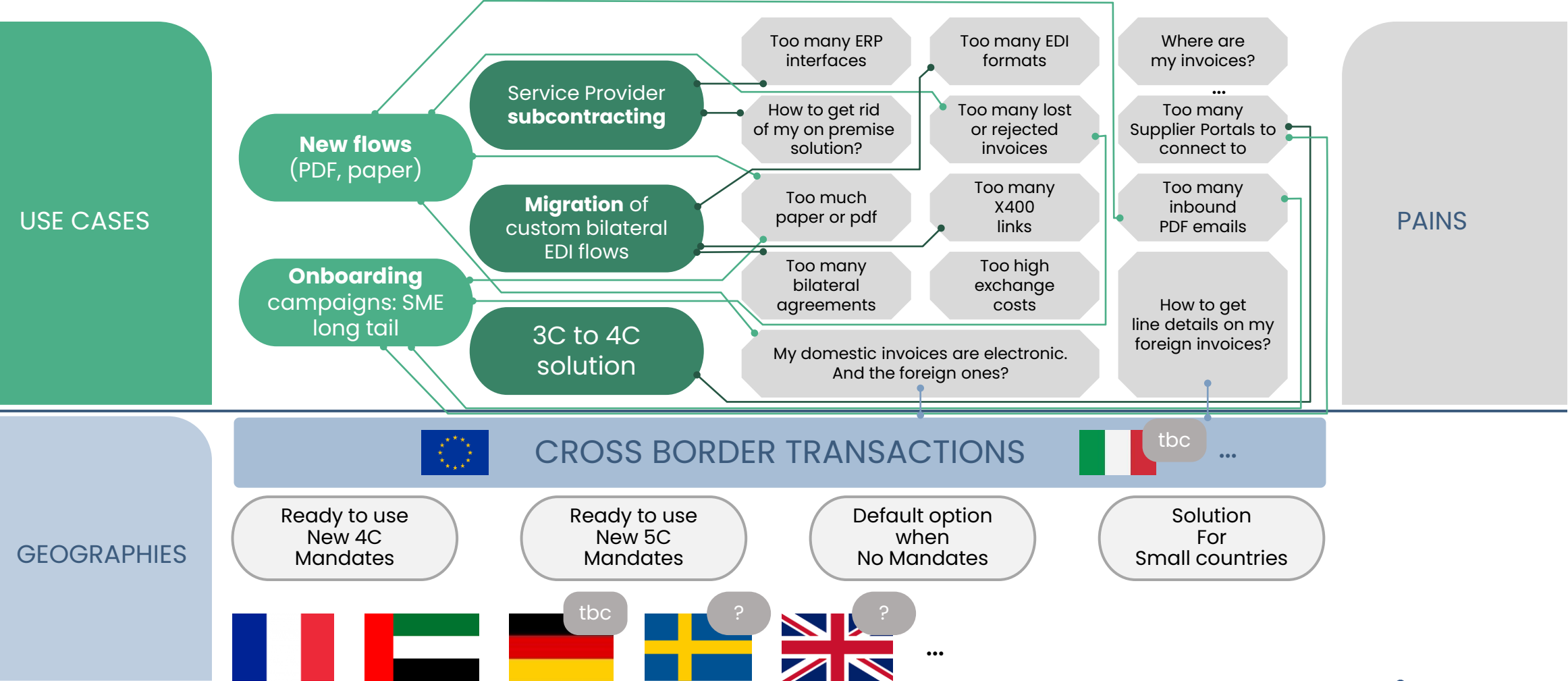


TAX ADMINISTRATIONS

- ✓ **Future proof:** nextgen standards
- ✓ **Robust:** fully distributed network
- ✓ **Secure:** SP certification, data hostage
- ✓ **Flexible:** 4C & 5C
- ✓ **Cost effective:** off-the-shelf
- ✓ **Standardised & harmonised**
- ✓ **CTC/ViDA/eIDAS aware**

What for ?

Potential eB2B business cases & removed pains

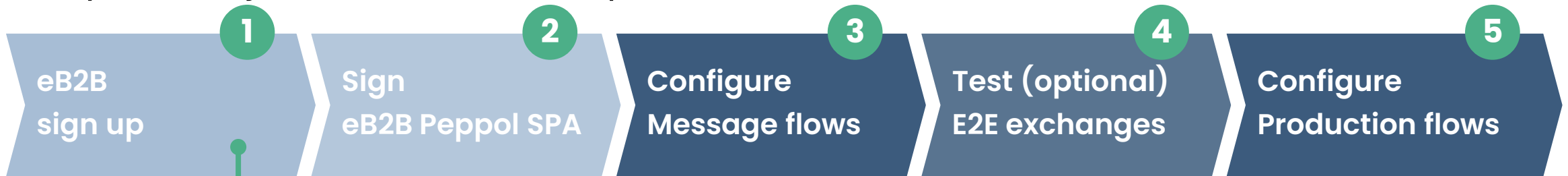


How?

eB2B onboarding steps

You can start in production NOW !

Easy to use, just follow the 5 steps:



eB2B Domain Sign-Up Form
Sign-Up Form eB2B Domain

Required fields are marked with an asterisk *

Email confirmation to *

Requester name *

Requester Company *

OpenPeppol/Gena Member
☐ OpenPeppol Member
☐ Gena Member

Description *

Implementation Elements:

- ▶ Std Invoice format: EN16931-B2B extension (UBL only)
- ▶ Non-XML Payloads: SBDH Binary/TextContent
- ▶ Digital Annexes: XML attachments
- ▶ Tracking: MLS
- ▶ Bi-Lateral Exchanges: SP Identification Scheme, Payloads, Selective Acceptance

eB2B label (wip)



BRONZE
E2E eB2B flows
tested ok



SILVER
eB2B flows in
production



GOLD
eB2B live flows
with tens of
trading partners
in production

❑ Michel GILIS – Chair of the GENA Interoperability WG
mgilis@axway.com

❑ Patrick SCHULLER – GENA COO
patrick.schuller@gena.net

❑ Michael WALTHER – OpenPeppol Operating Office – Project Manager
michael.walther.openpeppol@mmwalther.de